

Upper Albany West Finished Concrete Pavement

Location: City of Columbus

Pavement Type Selection: M/I Homes-Concrete Streets

Ready Mix Producer: Anderson Concrete Corp.

Contractor: Trucco Construction Co., Inc.

Year Constructed: 2014

Size/Vol/Area: 7500 SY

Upper Albany West





Ken API / Supply

Location: South Point, Ohio (The Point Industrial Park)

Pavement Type Selection: Ken / API, Jon Votel & Randy Ray

Ready Mix Producer: Pickett Concrete

Contractor: Stump & Dailey Concrete

Year Constructed: December 2013

Size/Vol/Area: 9000 SY

Pickett Concrete working with Ohio Concrete provided alternate pavement design recommendations and details to the owner. Pickett also was instrumental in recruiting a new contractor member to Ohio Concrete.

Ken API / Supply





6 Columbus Fire Stations Concrete Pavement

Location: Columbus OH

Pavement Type Selection: Ribway Engineering

Ready Mix Producer: Anderson Concrete

Contractor: Newcomer Concrete

Year Constructed: 2013/2014

Size/Vol/Area: 4500 CY

6 Columbus Fire Stations. Ohio Concrete, ESC Provided jointing layout details. Many of these sites are used as recycling centers.

Columbus Fire Stations





FST CNG Fuel Station with Surface Exposed RCC Pavement

Location: Atlas Rd, Hilliard OH

Ready Mix Producer: Anderson Concrete

Contractor: Igel Co.

Architect/Designer: CESO Inc.

Year Constructed: April 2014

Size/Vol/Area: 700 CY RCC

OC delivered LNL Presentations on RCC at the engineers office

FST CNG Fuel Station-RCC Pavement



Dollar General Store

Alternate Concrete Pavement

Location: Chillicothe OH

Ready Mix Producer: Tow Path Ready Mix

Contractor: Ideal Co. and B Concrete

Architect/Designer: GPD Group

Year Constructed: May 2014

Size/Vol/Area: 450 CY

Concrete Pavement Alternate-NRMCA AMY Miller, National Resource Director working with owner to approve ACI 330 Concrete Pavement Alternates. Tow Path provided concrete pavement alternate. Winter Construction

Dollar General Store



New Albany School & District Campus Bus Facility RCC Pavement

Location: New Albany, OH

Ready Mix Producer: Anderson Concrete

Contractor: Igel Co.

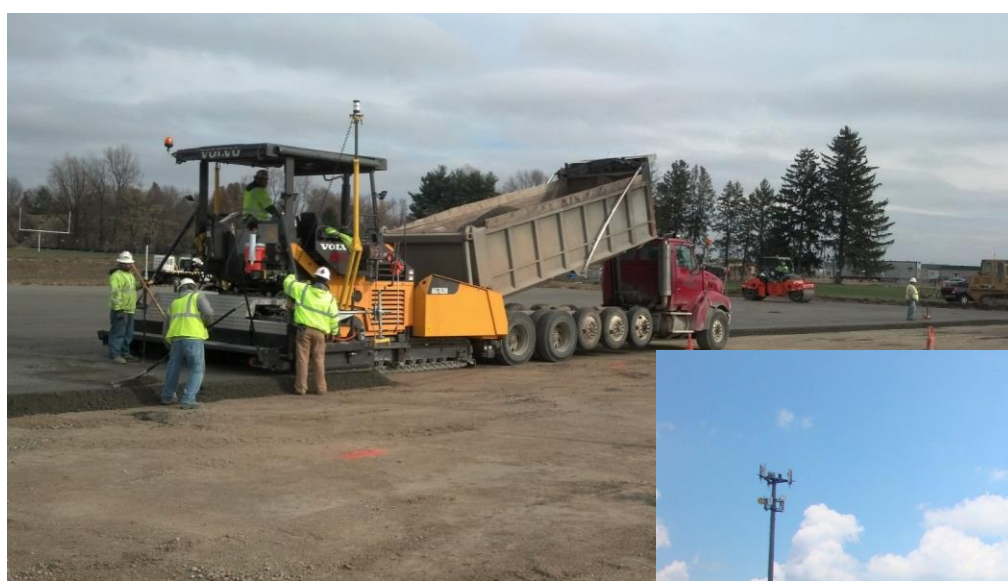
Architect/Designer: Moody-Nolan Arch/Eng

Year Constructed: 2013/2014

Size/Vol/Area: 5000 CY RCC

Contractor provided alternate. OC worked with Eng to approve RCC Pvt design.

New Albany School RCC Pavement



Buckeye Village Student Apts for OSU Mansfield Campus

Location: Mansfield, OH

Ready Mix Producer: Moritz Concrete

Contractor: Amcrete Concrete Construction

Architect/Designer: mkc Associates, Inc.

Year Constructed: Summer 2014

Size/Vol/Area: 60,000 SF Concrete Pavement

Moritz worked with Adena Corp. And Amcrete to provide a competitive concrete pavement option.

Buckeye Village Student Apts



Dollar Tree Store

Alternate Concrete Pavement

Location: Columbus, OH

Ready Mix Producer: Buckeye Ready-Mix

Contractor: Recon Construction

Architect/Designer: Sands Decker

Year Constructed: Late Summer 2014

Size/Vol/Area: 15,000 SF Concrete Pavement

Originally designed with pervious concrete and conventional concrete drive aisles

Dollar Tree Store Concrete Pavement



Pepper-Rickenbacker Whse Alternate RCC Base

Location: Groveport, OH

Construction Manager: Pepper Construction

Contractor / Supplier: Complete General Construction

Architect/Designer: EMH&T

Year Constructed: Fall 2014

Size/Vol/Area: 240,000 SF RCC Base Pavement

Contractor proposed alternate. First RCC Project in Columbus for Pepper Construction
7.5 " th on stone base with 1.5 inch asphalt surface. Previously asphalt pavement area.

Pepper-Rickenbacker Whse





Main Street Reconstruction with Finished Concrete Pavement

Location: Lancaster OH

Pavement Type Selection: City of Lancaster, Dept. of Transp. and Engineering

Ready Mix Producer: Buckeye Ready-Mix, LLC

Contractor: Lionel Construction Co., Inc.

Year Constructed: 2014

Size/Vol/Area: 7500 SY

Main Street was part of an ODOT - Asphalt Mill & Fill Project. The City paid extra to substitute for a 10" Thick Plain Jointed Concrete Pavement because of rutting and shoving issues in the previous 10 year old asphalt overlay, that was part of a Streetscape Project.

Main St. Lancaster



Main St. Lancaster



Main St. Lancaster



Central/SE Ohio Concrete Region Main Street Reconstruction Project



2014

PROJECT OF
THE YEAR
AWARD



Presented to:

City of Lancaster
Dept of Transportation & Engineering